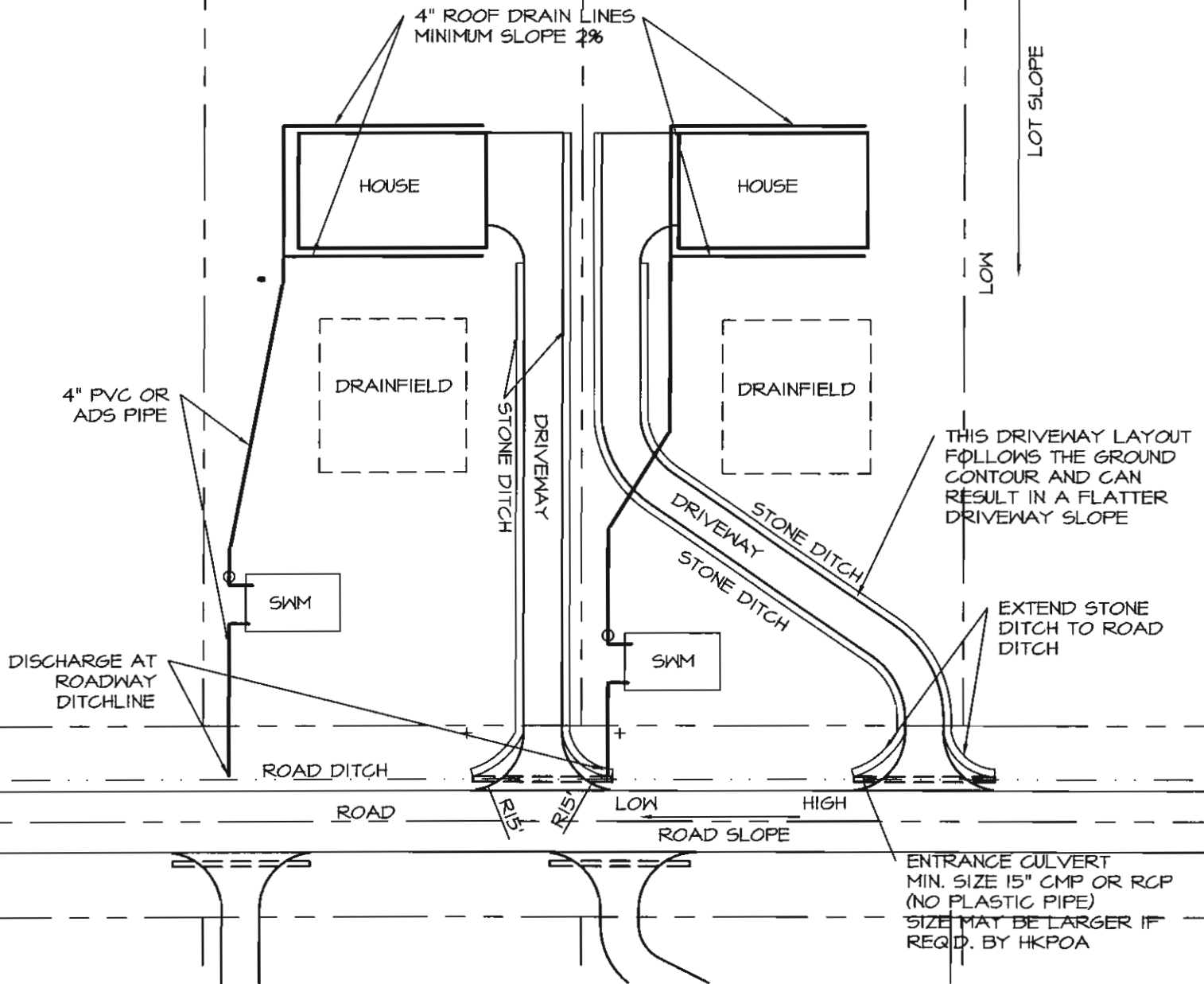


ALTERNATE 1

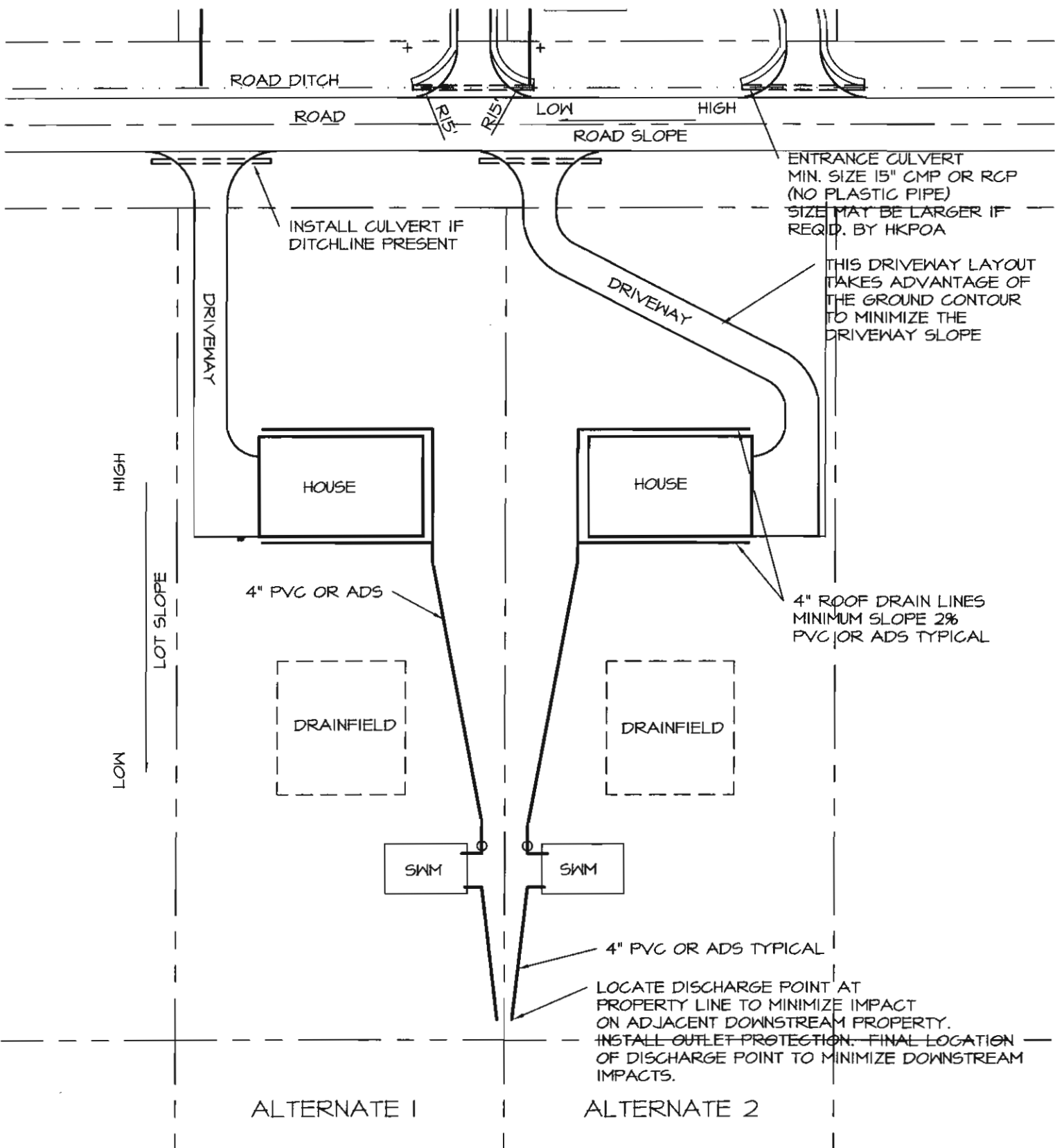
ALTERNATE 2



# TYPICAL UPHILL LOT LAYOUT

D-1

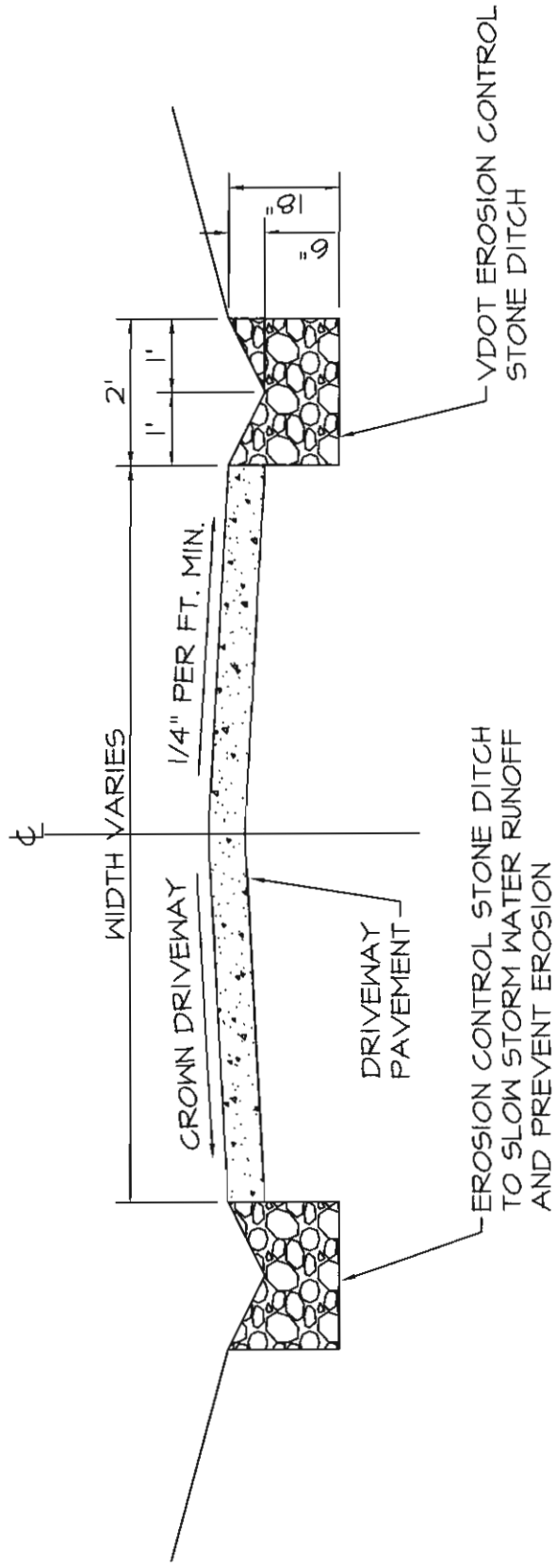
NO SCALE



TYPICAL DOWNHILL LOT LAYOUT

D-2

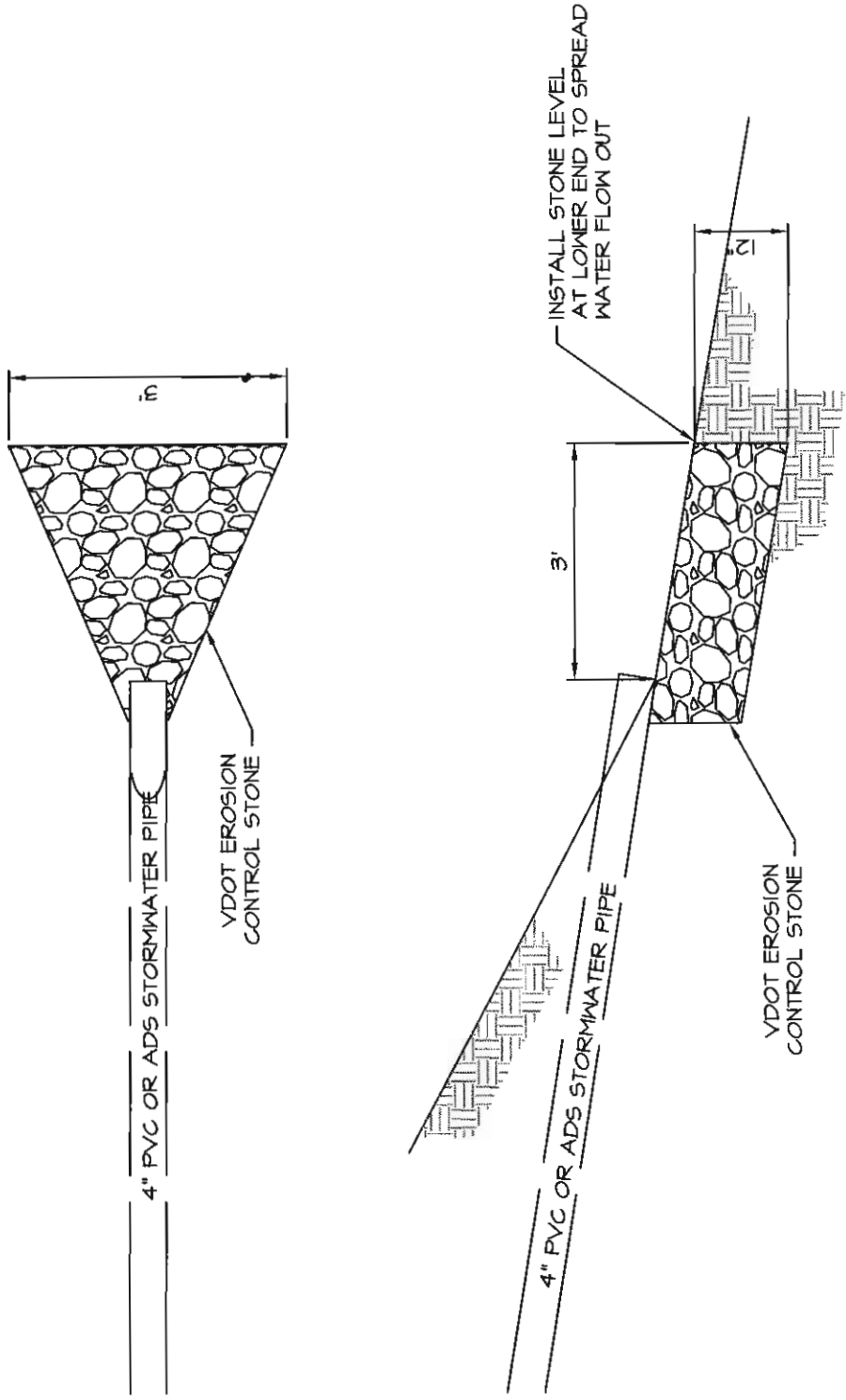
NO SCALE



TYPICAL DRIVEWAY SECTION

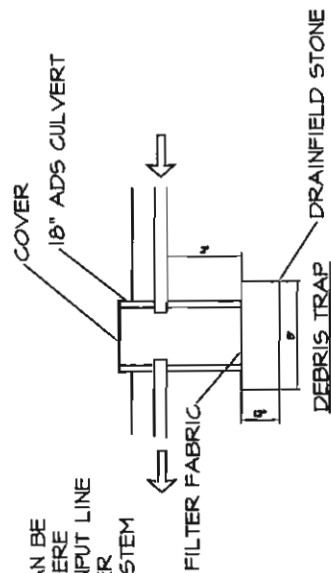
D-3 NO SCALE

HIGH KNOB PROPERTY OWNER'S ASSOCIATION  
 LOT DEVELOPMENT STANDARDS  
 WARREN COUNTY VIRGINIA



STORMWATER OUTLET PROTECTION DETAIL

HIGH KNOB PROPERTY OWNER'S ASSOCIATION  
 LOT DEVELOPMENT STANDARDS  
 WARREN COUNTY VIRGINIA

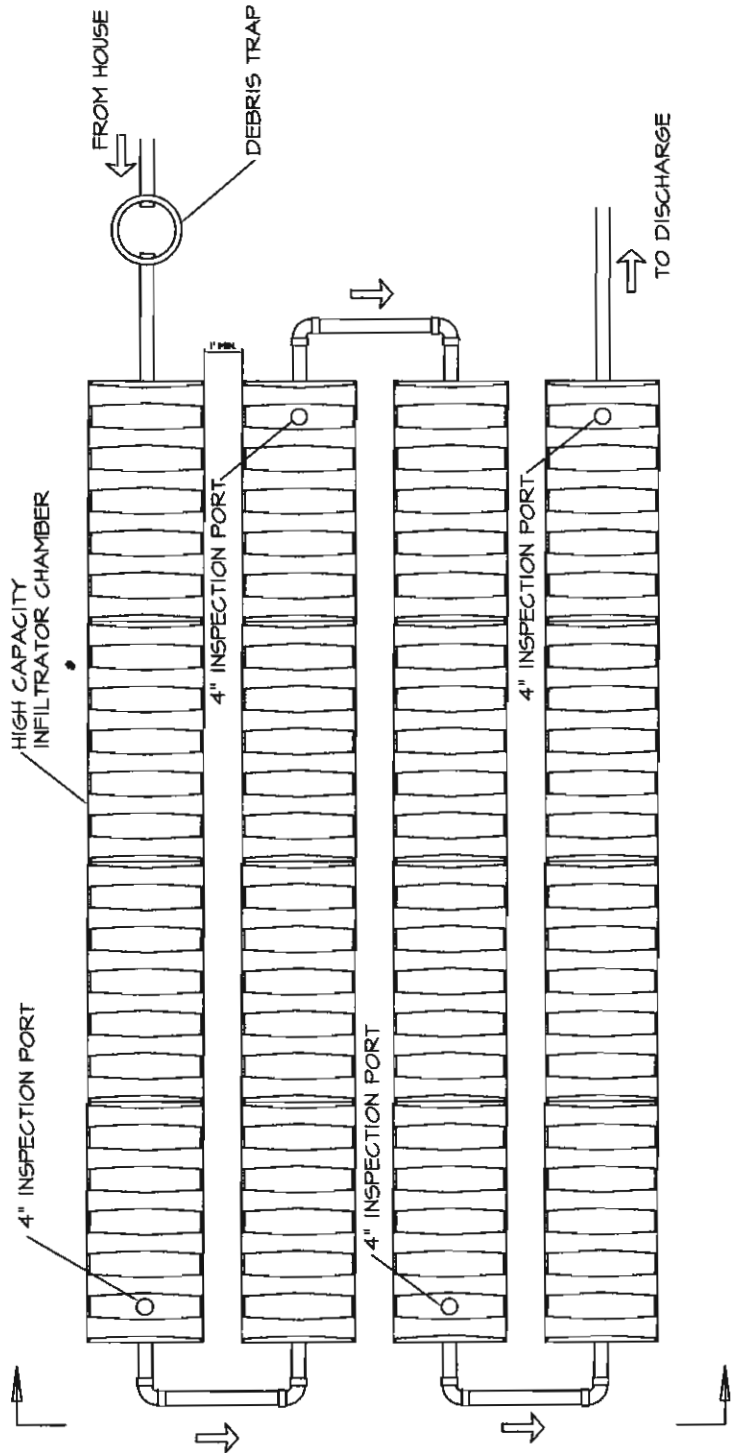


NOTE:  
DEBRIS TRAP CAN BE  
LOCATED ANYWHERE  
BETWEEN LAST INPUT LINE  
AND STORMWATER  
MANAGEMENT SYSTEM

TOTAL NUMBER INFILTRATOR  
CHAMBERS REQUIRED - 16

ALTERNATE LAYOUTS

ALL PIPE 4" PVC OR ADS  
MINIMUM PIPE SLOPE 2%

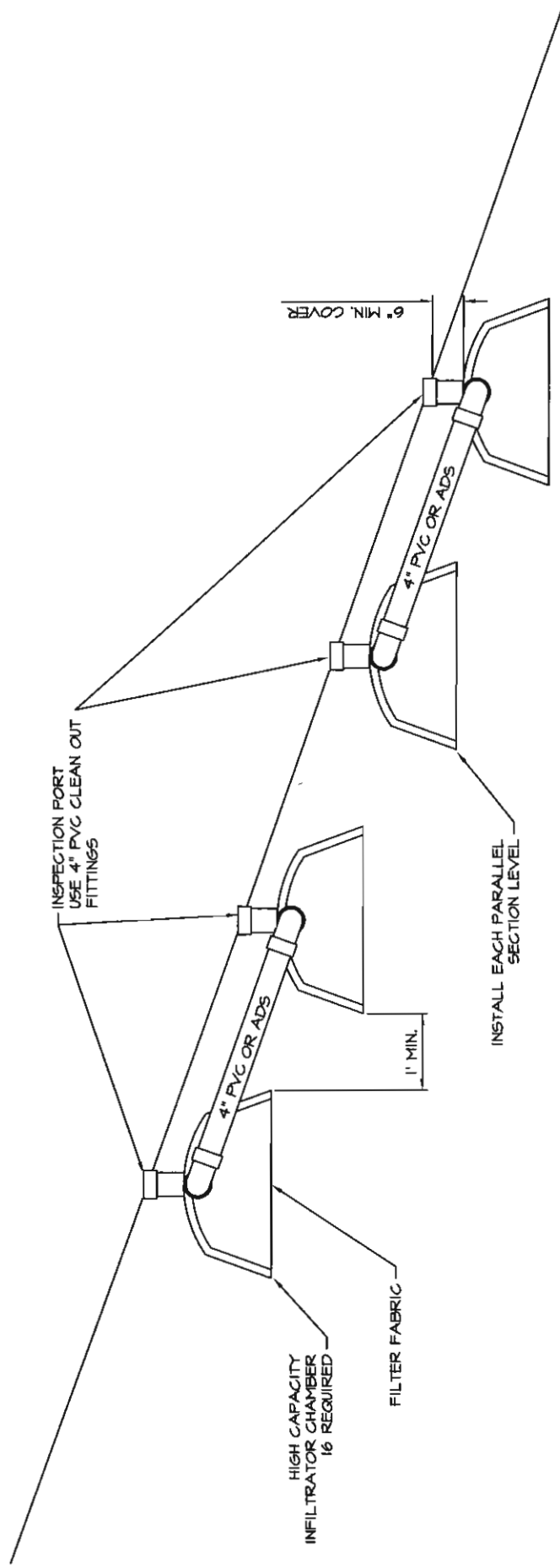


# STORMWATER MANAGEMENT SYSTEM PLAN

NO SCALE

D-5

HIGH KNOB PROPERTY OWNER'S ASSOCIATION  
LOT DEVELOPMENT STANDARDS  
WARREN COUNTY VIRGINIA



# STORMWATER MANAGEMENT SYSTEM SECTION

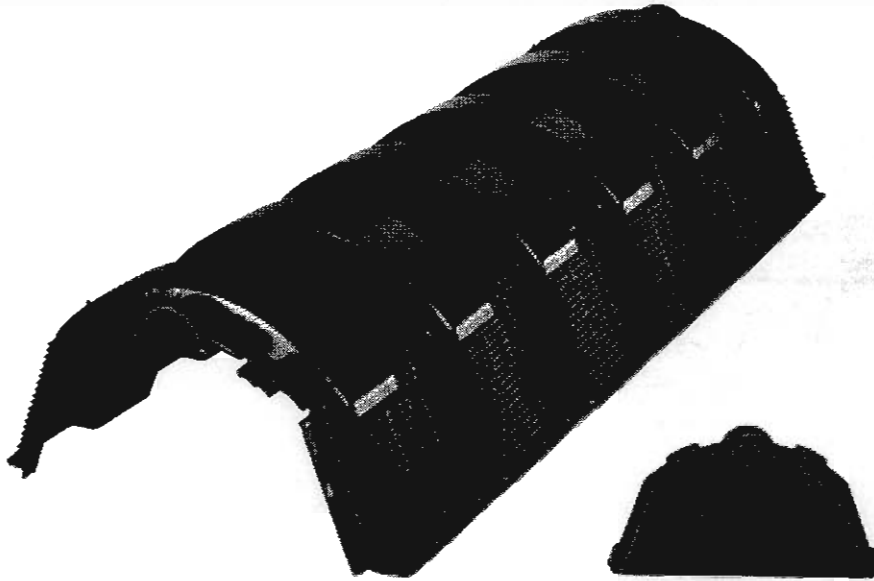
NO SCALE

D-6

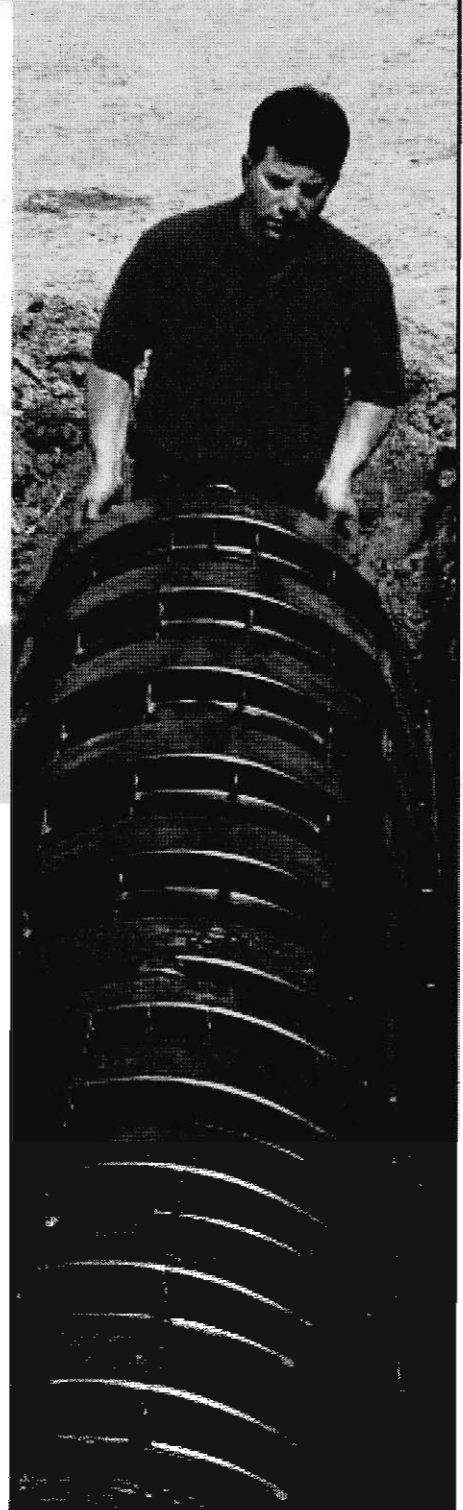
HIGH KNOB PROPERTY OWNER'S ASSOCIATION  
 LOT DEVELOPMENT STANDARDS  
 WARREN COUNTY VIRGINIA

The High Capacity  
**Infiltrator**<sup>®</sup>  
Chamber

**INFILTRATOR**<sup>®</sup>  
**SYSTEMS INC**  
*Environmental Onsite Wastewater Solutions™*



The High Capacity Infiltrator Chamber offers maximum volume per linear foot for extra temporary storage capacity. The 10" louvered sidewalls facilitate infiltration and evapotranspiration. With 12" of compacted cover, it supports 16,000 lbs/axle, equivalent to an H-10 AASHTO rating.



**The High Capacity Infiltrator Chamber System Offers You These Unique Benefits:**

- More temporary storage capacity
- Maximum internal volume per linear foot
- Easy assembly and installation with as few as two people, a back-hoe and a pickup truck
- Inspection port option for easy access to leachfield with no site disruption
- **OVERALL REDUCED COST**

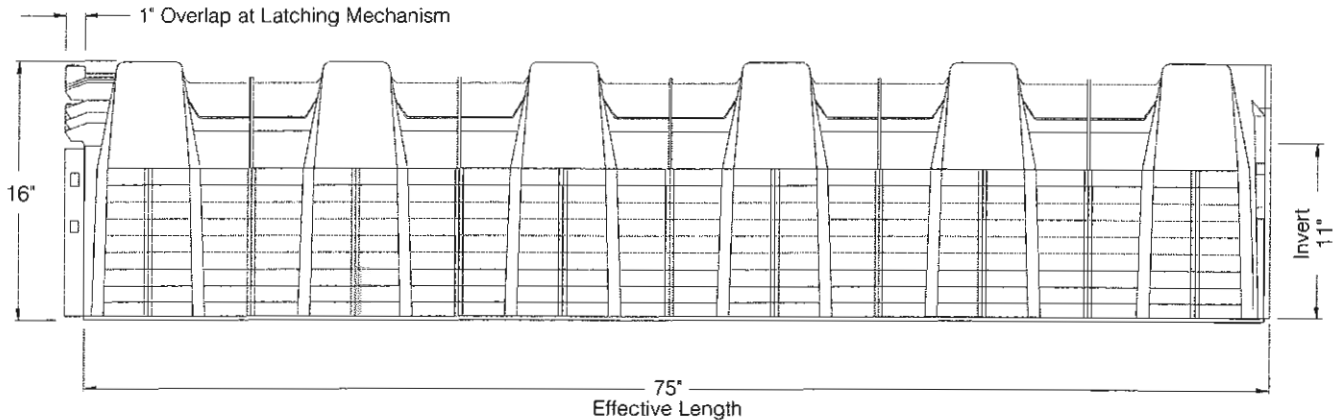
**Tested and Proven with More than One Million Systems Installed**

- Infiltrator is the number-one septic leachfield chamber system in the onsite industry.
- More than one million systems have been installed, with over 27 million units in-ground in all 50 states and 24 countries.
- Infiltrator's established history of performance and reliability began in 1987.
- Field surveys show that Infiltrator chamber systems, at 50% reduced sizing, perform equivalent to full-size stone and pipe systems.
- Infiltrator is ISO 9001:2000 certified and is IAPMO tested and UPC approved.

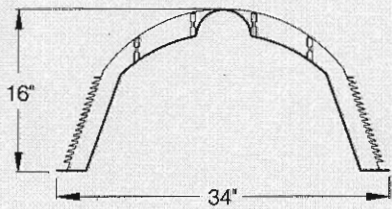
Approved in \_\_\_\_\_

# The High Capacity Infiltrator® Chamber

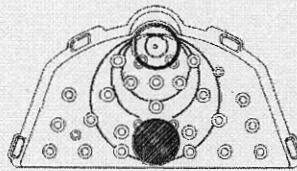
## The High Capacity Infiltrator Chamber



**Chamber End View**



**PosiLock™ End Plate**



### Specifications

Size (W x L x H).....	34" x 75" x 16" (85 cm x 191 cm x 41 cm)
Storage Capacity .....	114.4 gal (433 L)
Weight.....	38 lbs (17.2 kg)
Louvered Sidewall Height .....	10" (25 cm)

#### INFILTRATOR SYSTEMS, INC. STANDARD LIMITED WARRANTY

##### INFILTRATOR SYSTEMS, INC. ("Infiltrator") STANDARD LIMITED WARRANTY FOR SEPTIC PRODUCTS

(a) The structural integrity of each chamber and end plate manufactured by Infiltrator (collectively referred to as "Units"), when installed and operated in a leachfield of an onsite septic system in accordance with Infiltrator's installation instructions, is warranted to the original purchaser ("Holder") against defective materials and workmanship for one (1) year from the date upon which a septic permit is issued for the septic system containing the Units; provided, however, that if a septic permit is not required for the septic system by applicable law, the one (1) year warranty period will begin upon the date that installation of the septic system commences. In order to exercise warranty rights, Holder must notify Infiltrator in writing at its corporate headquarters in Old Saybrook, Connecticut, within fifteen (15) days of the alleged defect. Infiltrator will supply replacement Units for those Units determined by Infiltrator to be defective and covered by this Limited Warranty. Infiltrator's liability specifically excludes the cost of removal and/or installation of the Units.

(b) THE LIMITED WARRANTY AND REMEDIES IN SUBPARAGRAPH (a) ARE EXCLUSIVE. THERE ARE NO OTHER WARRANTIES WITH RESPECT TO THE UNITS, INCLUDING NO IMPLIED WARRANTIES OF MERCHANTABILITY OR FITNESS FOR A PARTICULAR PURPOSE.

(c) The Limited Warranty does not extend to incidental, consequential, special or indirect damages. Infiltrator shall not be liable for penalties or liquidated damages, including loss of production and profits, labor and materials, overhead costs, or other losses or expenses incurred by the Holder or any third party. Specifically excluded from Limited Warranty coverage is damage to the Units due to ordinary wear and tear, alteration, accident, misuse, abuse or neglect of the Units; the Units being subjected to vehicle traffic or other conditions which are not permitted by the installation instructions; failure to maintain the minimum ground covers set forth in the installation instructions; the placement of improper materials into the system containing the Units; failure of the Units or the septic system due to improper siting, improper sizing, excessive water usage, improper grease disposal or improper operation or any other event not caused by Infiltrator. This Limited Warranty shall be void if the Holder fails to comply with all of the terms set forth in this Limited Warranty. Further, in no event shall Infiltrator be responsible for any loss or damage to the Holder, the Units, or any third party resulting from installation or shipment, or from any product liability claims of Holder or any third party. For this Limited Warranty to apply, the Units must be installed in accordance with all site conditions required by state and local codes, all other applicable laws and Infiltrator's installation instructions.

(d) No representative of Infiltrator has the authority to change this Limited Warranty in any manner whatsoever, or to extend this Limited Warranty. No warranty applies to any party other than the original Holder.

The above represents the standard Limited Warranty offered by Infiltrator. A limited number of states and counties have different warranty requirements. Any purchaser of Units should contact Infiltrator's corporate headquarters in Old Saybrook, Connecticut, prior to such purchase, to obtain a copy of the applicable warranty and should carefully read that warranty prior to the purchase of Units.

Infiltrator Systems does not recommend installing onsite systems under pavement. Chambers must be installed according to manufacturer's instructions. Failure to install according to manufacturer's instructions will void warranty. Infiltrator Systems recommends the use of septic tank filters and laundry filters with all onsite septic systems.

# INFILTRATOR® SYSTEMS INC

*Environmental Onsite Wastewater Solutions™*

6 Business Park Road • P.O. Box 768  
Old Saybrook, CT 06475  
860-577-7000 • FAX 860-577-7001

**1-800-221-4436**

**www.infiltratorsystems.com**

**For technical assistance, installation instructions or customer service, call Infiltrator Systems at 1-800-221-4436.**

U.S. Patents: 4,759,661; 5,017,041; 5,156,488; 5,336,017; 5,401,116; 5,401,459; 5,511,903; 5,716,163; 5,588,778; 5,839,844  
Canadian Patents: 1,329,959; 2,004,564 Other patents pending.

Infiltrator, Equalizer and SideWinder are registered trademarks of Infiltrator Systems Inc. Infiltrator is a registered trademark in France. Infiltrator Systems Inc. is a registered trademark in Mexico. Contour, MicroLeaching, PolyTuff, SnapLock, ChamberSpacer, PosiLock, QuickCut and QuickPlay are trademarks of Infiltrator Systems Inc. © 2003 Infiltrator Systems Inc. All rights reserved. Printed in U.S.A.

C720603WA-2